

CARNEGIE SCHOOL OF HOME ECONOMICS

EXCELLENCE THROUGH CREATIVITY

STUDENTS' GUIDE TO

UNIFORM DRESSING

A Fashion Magazine



Conceptualized & Sketched by
Mrs. Myrna Lee

Inside

UNIFORM DRESSING 101

CATERING & HOSPITALITY

GENERAL COSMETOLOGY

HOUSEHOLD MANAGEMENT

COMMERCIAL FOOD PREPARATION

NUTRITION FOR DIETARY TECHNICIANS

INTERIOR DECORATION

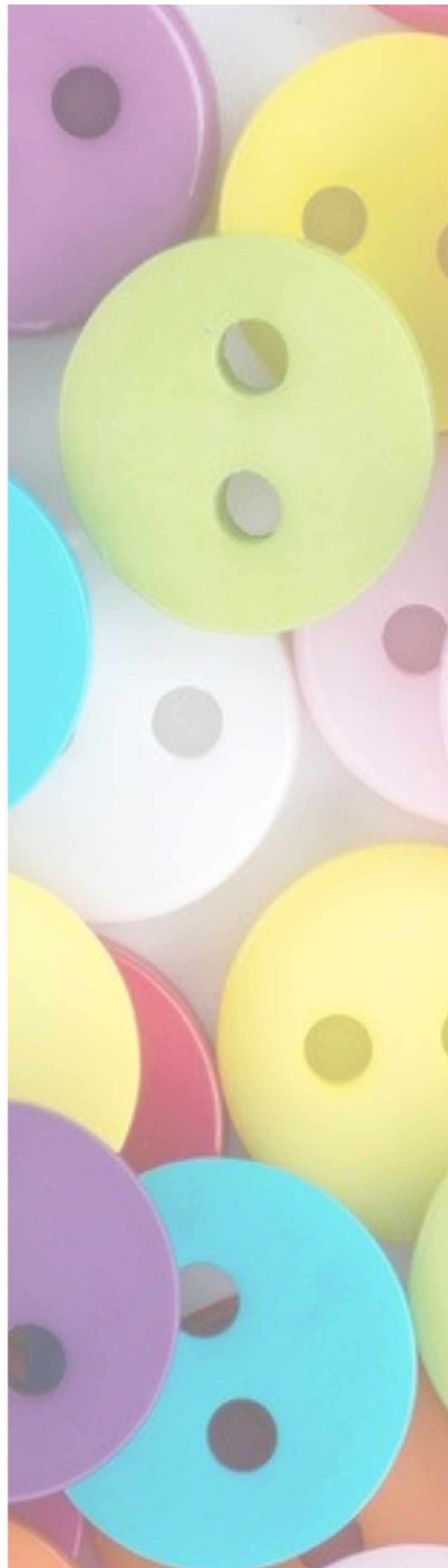
GARMENT MAKING

CHILD CARE MANAGEMENT

CARE FOR THE EDLERLY

HOUSEKEEPING

PROTECTIVE CLOTHING (ALL DEPARTMENTS)



Excellence Through Creativity



CHAPTER ONE



UNIFORM DRESSING 101

CATERING & HOSPITALITY

CHAPTER ONE

CATERING & HOSPITALITY

fashion Guide

Sketch Designed by Mrs. Mryna Lee

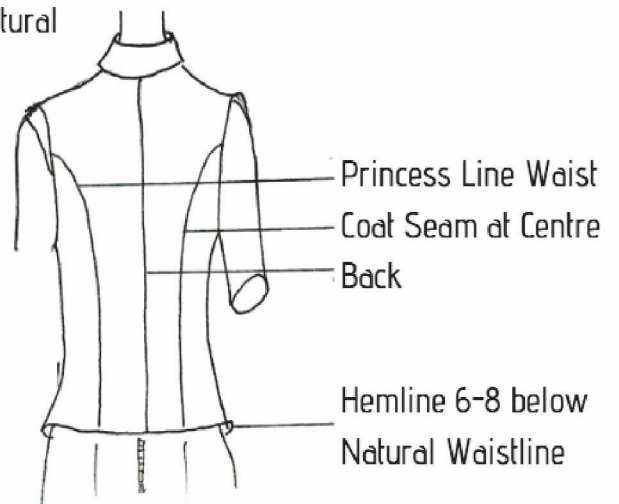
UNIFORM OVERVIEW: RESTAURANT

DETAILS: WHITE SHIRT - WHITE POLYESTER | 3/4" SLEEVE
 WAIST COAT - BURGUNDY TETREX | POCKET AT WAISTLINE BUTTONS AT THE FRONT | 4 PIECES AT BACK
 6 GORED SKIRT - BLACK TETREX | 3" BELOW THE KNEE ZIP AT THE BACK | A-LINED SHAPE

FRONT VIEW



COLOR SCHEME



BACK VIEW

VARIATIONS:

- FULL FIGURED
- DEEPER OPENING
- TIE INSTEAD OF SCARF
- IF SCARF IS USED, IT SHOULD BE A STRIP OF FABRIC
- GOLD BADGE
- WAIST COAT SHOULD NOT BE FITTED

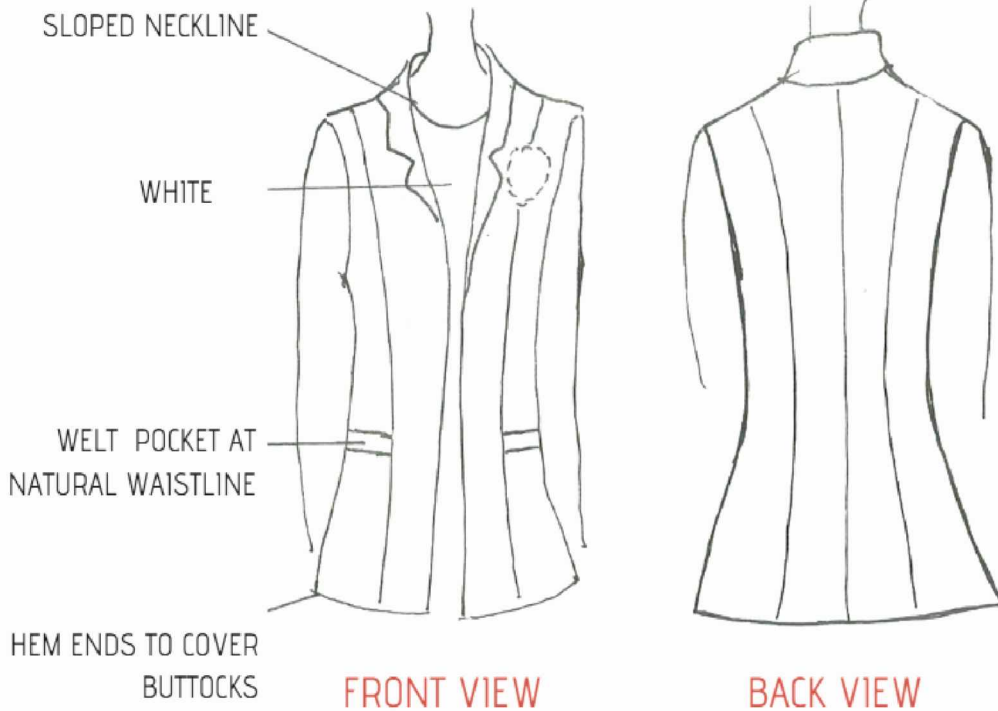
UNIFORM OVERVIEW: GENERAL UNIT

DETAILS: BURGANDY BLAZFR, WHITE BLOUSE, BLACK TAILORED PANTS, FOUR GORFD SKIRT, BLACK SHOFS, BLACK STOCKINGS/ SOCKS

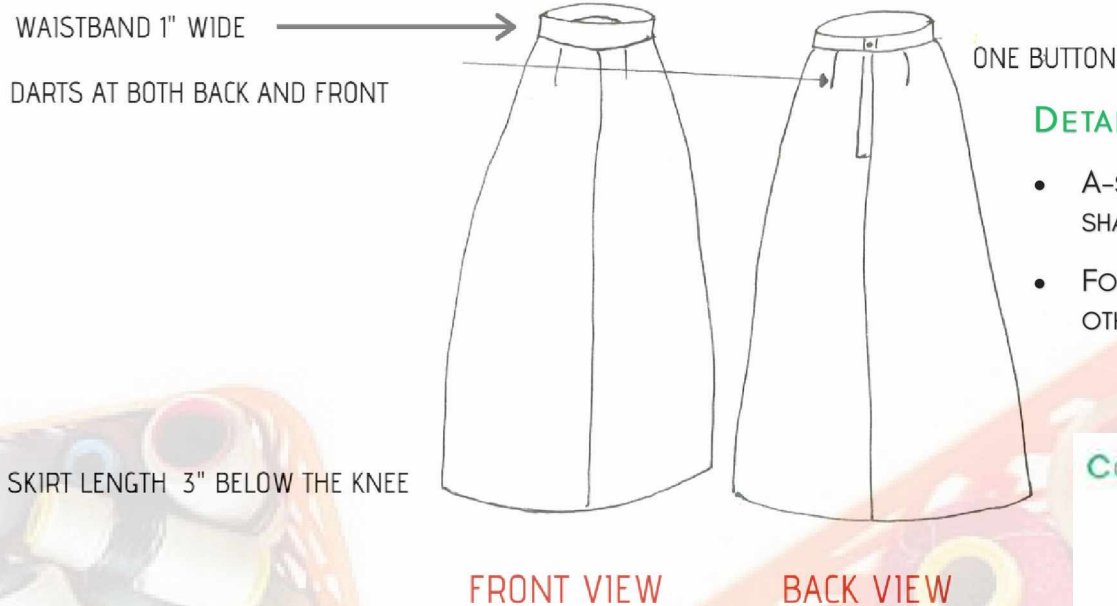
VARIATIONS:

- BLOUSE CAN BE SCOPED FOR A PETITE FIGURE AND 'V' NECK FOR FULL FIGURED.
- SCARFS CAN BE USED IN AN ALTERNATE STYLE BASED ON FIGURE TYPE.
- SCHOOL'S MONOGRAM CAN BE PLACED ON THE RIGHT SIDE.
- MALE STUDENTS WILL USE FLAP POCKETS.

COLOR SCHEME



UNIFORM OVERVIEW: FULL FIGURED VARIATION A' LINE FORE GORED SKIRT



DETAILS:

- A-SHAPED NOT PENCIL SHAPED
- FORE GORED, NOT ANY OTHER STYLE

COLOR SCHEME



UNIFORM OVERVIEW: HOT MEAT/BAKE SHOP

DETAILS: BLACK BUTTONS SEAM FROM SHOULDER TO HEMLINE | HEM AT OPENING ENDS IN "V" SHAPE | LENGTH OF COAT ENDS BELOW THE BUTTOCKS | WHITE TEXTREX

COLOR SCHEME:



UNIFORM OVERVIEW: LOOSELY FITTED PANTS

DETAILS: STRAIGHT BOTTOM | SLIGHTLY FITTED TO ALLOW FOR BENDING WITH EASE | SHOULD NOT FALL BELOW THE ANKLES



COLOR SCHEME

DETAILS

**CATERING &
HOSPITALITY**

**CHIC
PROFESSIONAL
SOPHISTICATED
QUINTESSENTIAL**



// YOU CAN HAVE ANYTHING YOU WANT

**IF YOU DRESS
FOR IT.**

- EDITH HEAD

#CHOOSE SUCCESS #WORK FOR IT





A CLASSIC LOOK NEVER G

OUT-OF-STY

- ANONYMOUS

GOES
LE



DETAILS

**CATERING &
HOSPITALITY**



**SHARP
PROFESSIONAL
SOPHISTICATED
ARCHETYPAL**

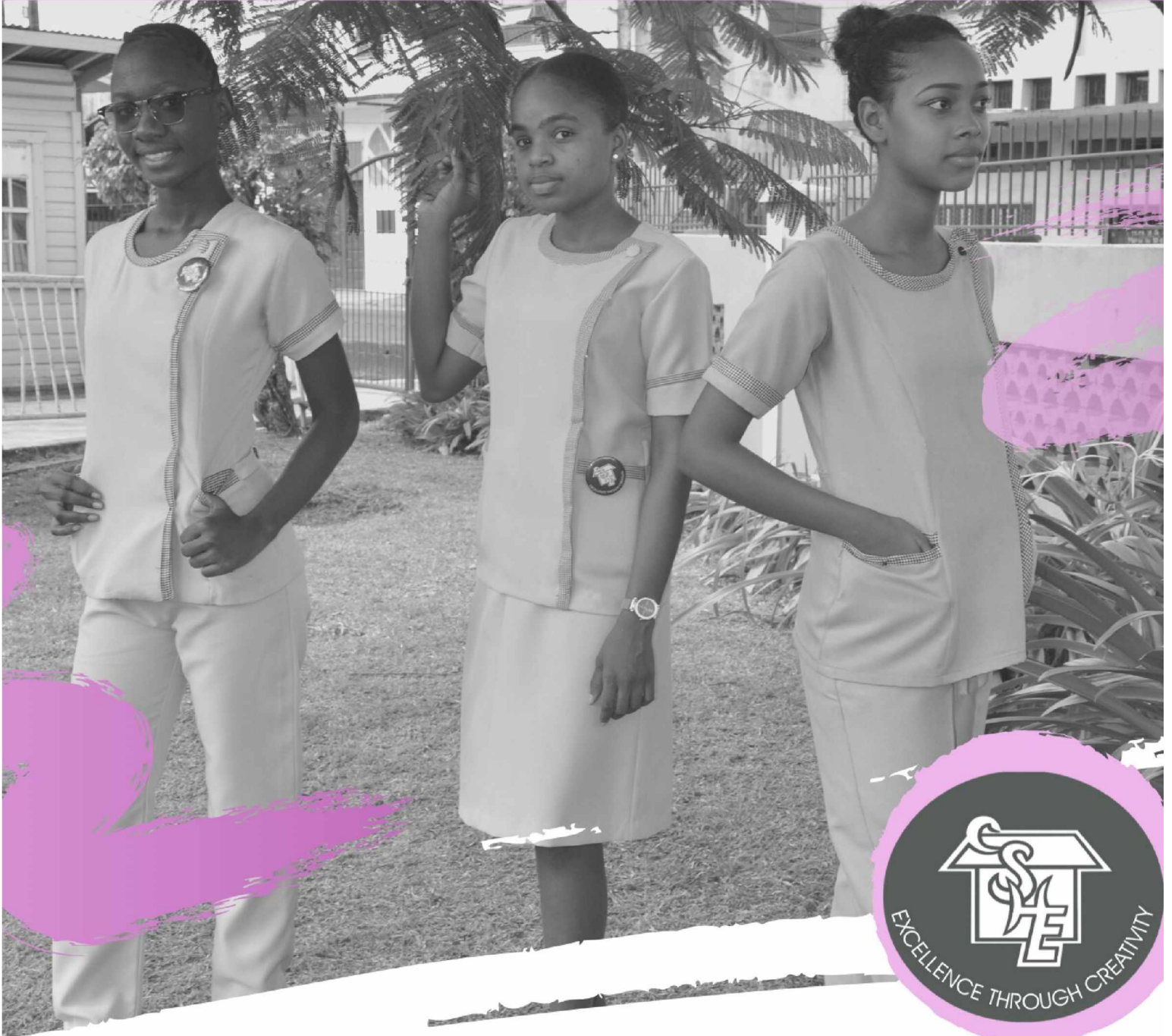
// IN A WORLD FULL OF TRENDS REMAIN A
CLASSIC GENTLEMAN.

- I M A N

**#CHOOSE SUCCESS #WORK FOR IT
#CATERING & HOSPITALITY**



CHAPTER TWO



UNIFORM DRESSING 101

GENERAL COSMETOLOGY

CHAPTER TWO

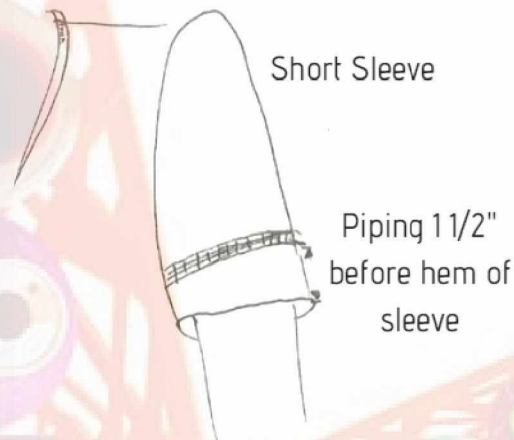
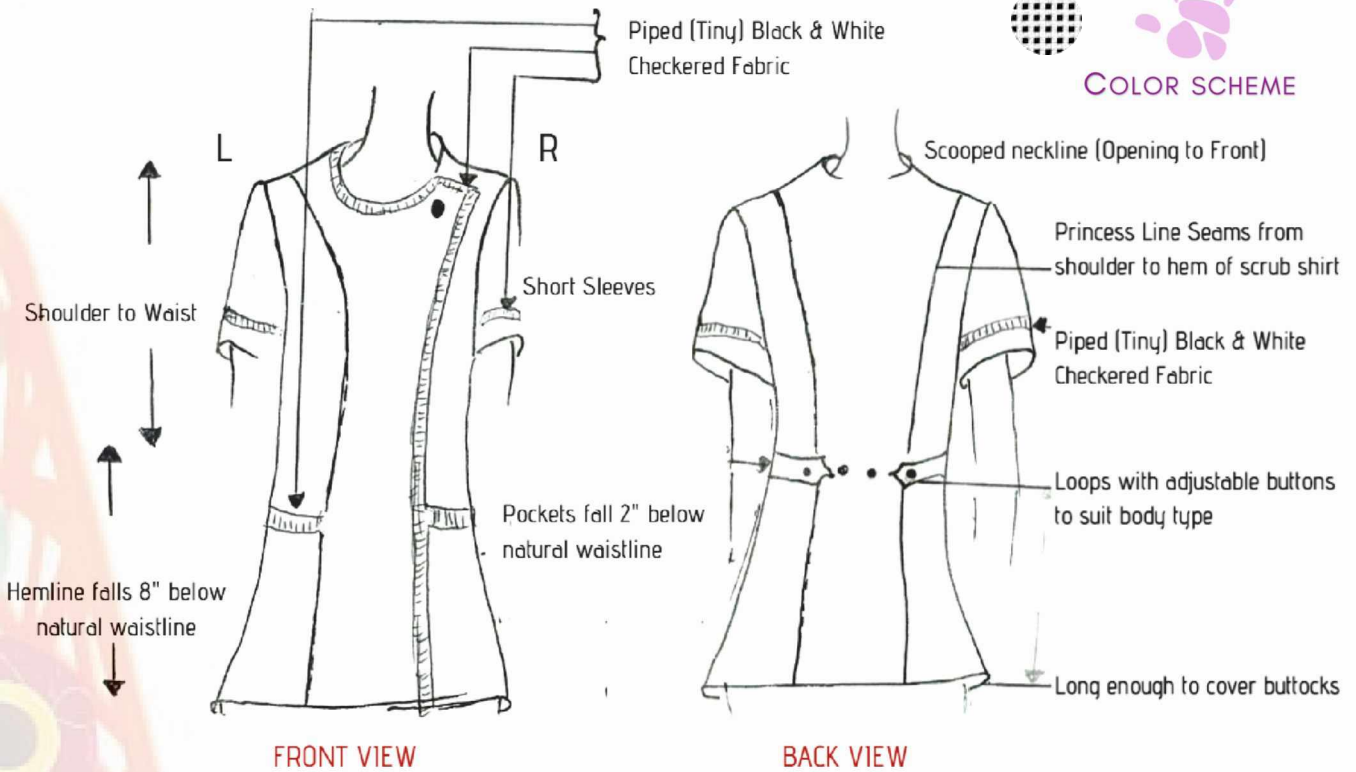
GENERAL COSMETOLOGY

fashion Guide

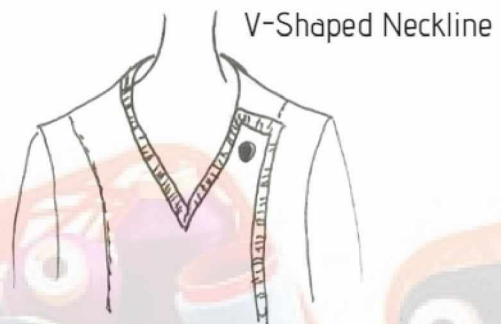
Sketch Designed by Mrs. Mryna Lee

UNIFORM OVERVIEW: SCRUBS SHIRT

DETAILS: LILAC | PRINCESS LINE SEAM (L) PIPED CHECKERED ON RIGHT | WELT POCKETS WITH BACK AND WHITE CHECKERED FABRIC | BLACK BUTTONS | LILAC LOOPS

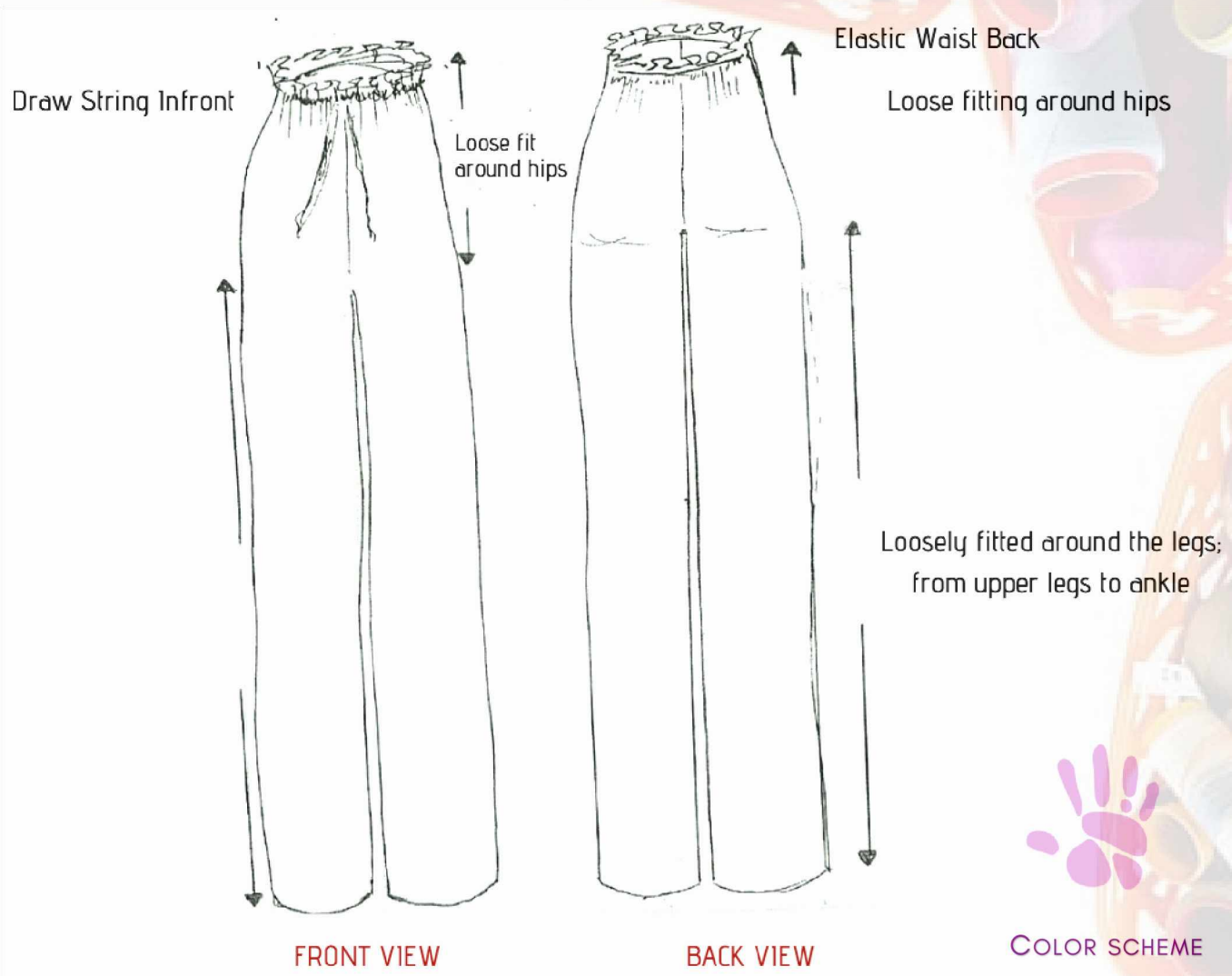


VARIATION FOR FULL FIGURED FEMALES



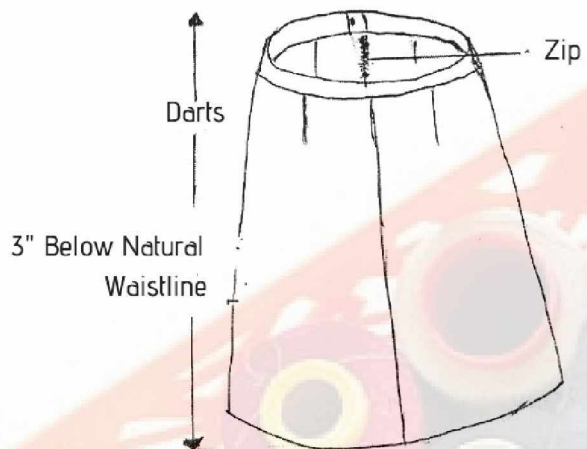
UNIFORM OVERVIEW: SCRUBS PANTS

DETAILS: LILAC | ELASTIC WAIST (BACK) | DRAW STRING (FRONT) | LOOSELY FITTED



UNIFORM OVERVIEW: FOUR GORED A-LINED SHAPE SKIRT

DETAILS: LILAC | FOR FULL FIGURED FEMALES





”

I THINK IT'S A
BEAUTIFUL THING WHEN
YOU WEAR A UNIFORM
WHICH REPRESENTS A
GROUP OF PEOPLE,
BECAUSE WHAT IT
IMMEDIATELY
SYMBOLIZES IS
ONENESS,
TOGETHERNESS.

- N I A L O N G

DETAILS

GENERAL COSMETOLOGY

CLOTHES AREN'T
GOING TO CHANGE
THE WORLD
THE WOMEN WHO
WEAR IT *WILL*

- ANNE KLEIN



CARNEGIE SCHOOL
OF
HOME ECONOMICS



SIMPLICITY IS THE
ALL T



THE KEYNOTE OF
TRUE ELEGANCE

-Coco Chanel



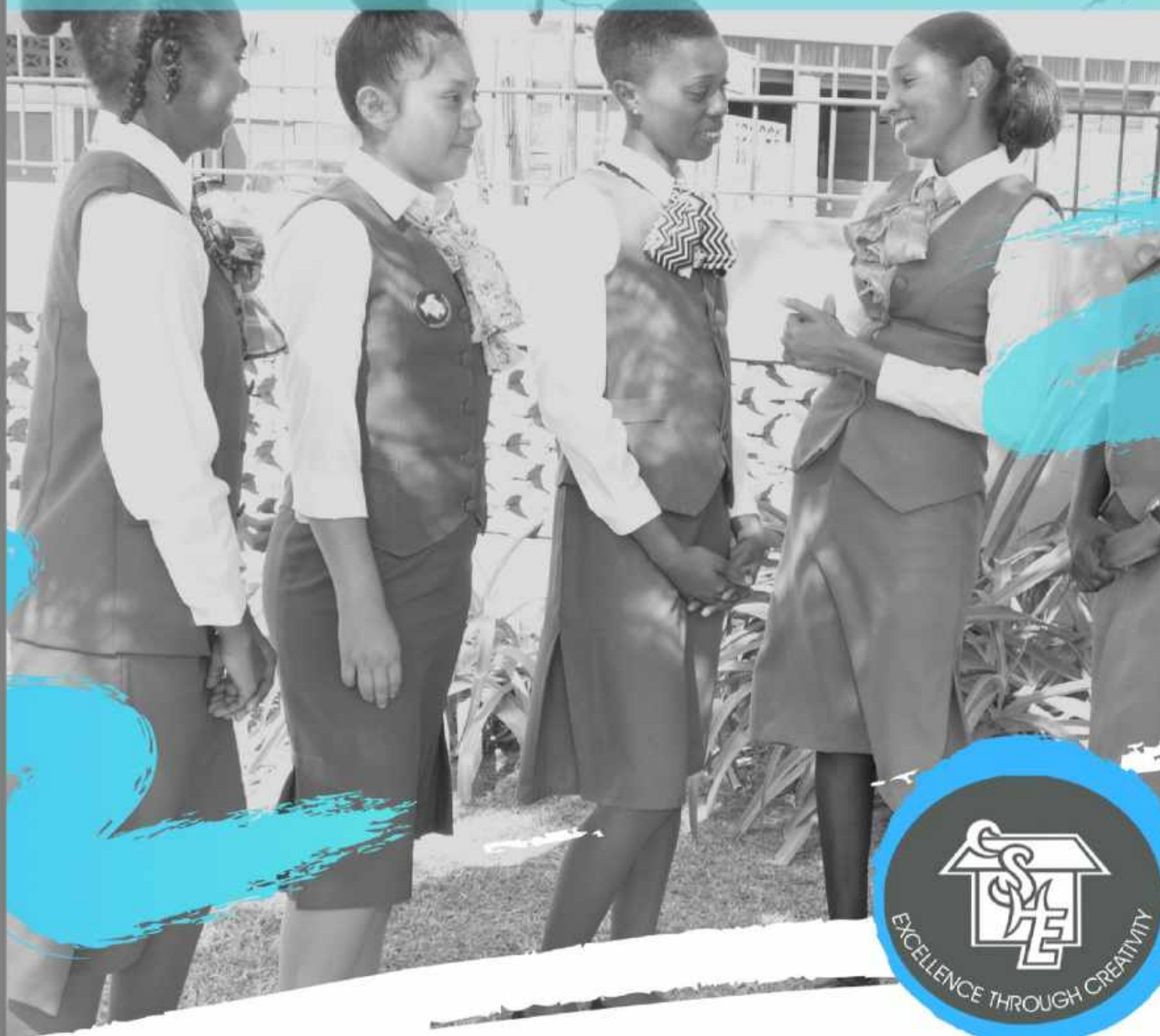


CHIC
PROFESSIONAL
SOPHISTICATED
QUINTESSENTIAL

“ DRESSING WELL IS A FORM OF
GOOD MANNERS.

- TOM FORD

CHAPTER THREE



UNIFORM DRESSING 101

HOUSEHOLD MANAGEMENT

CHAPTER THREE

HOUSEHOLD MANAGEMENT

fashion Guide

Sketch Designed by Mrs. Mryna Lee

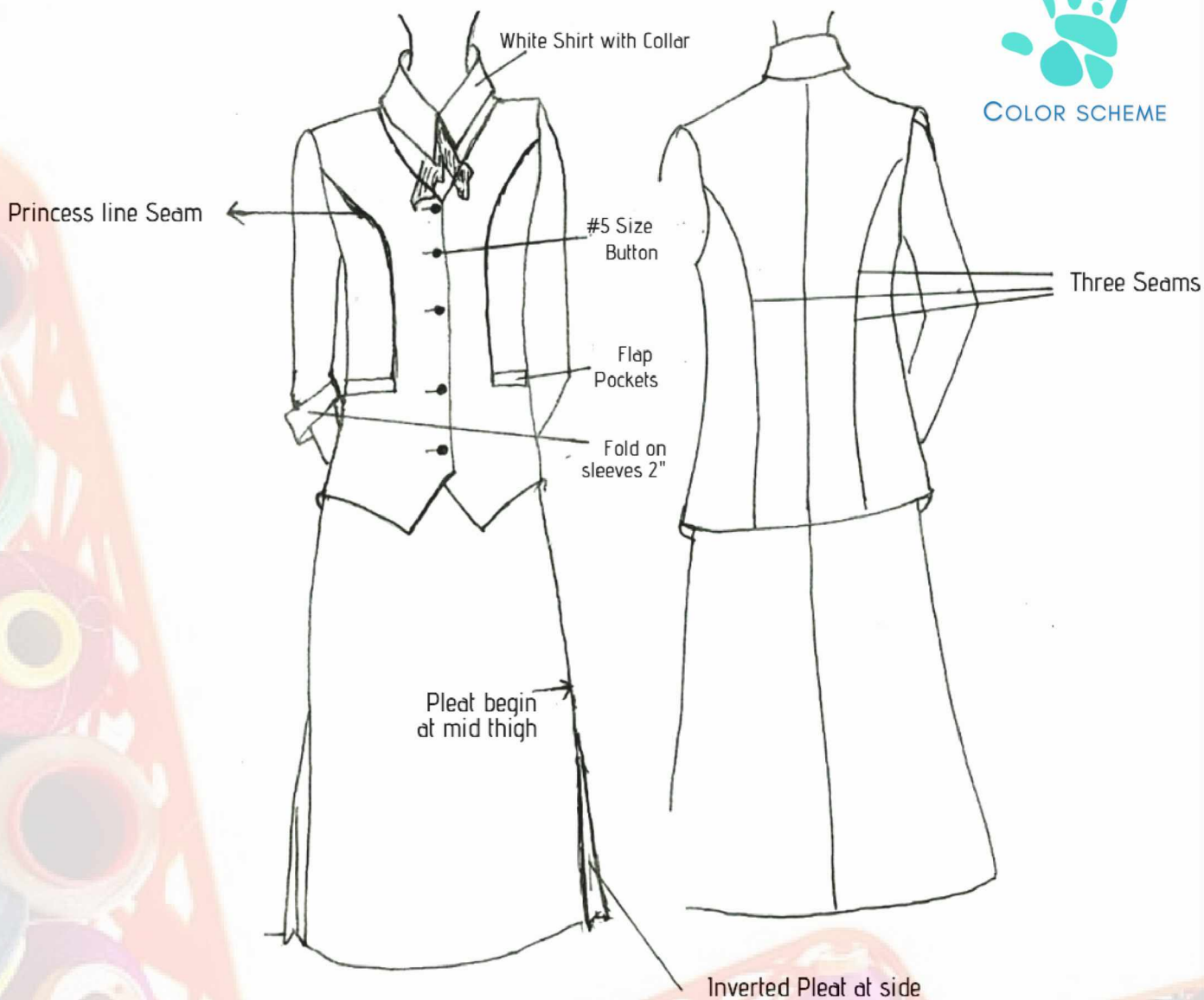
UNIFORM OVERVIEW: GENERAL

FRONT VIEW

BACK VIEW



COLOR SCHEME



DETAILS: TURQUOISE TEXTREX | TURQUOISE COVERED BUTTONS

VARIATION OF PLEATS

- FULL FIGURED—FRONT PLEATS
- SKIM FIGURED—SIDE PLEATS
- BOTH BEGIN AT MID THIGH

DETAILS FOR SKIRT

- 3" DEPTH INVERTED PLEAT AT SIDES FOR SLIM FIGURED FEMALES
- INVERTED PLEATS BEGIN AT MID THIGH
- ZIP AT THE BACK OF THE SKIRT
- SKIRT END 3" BELOW THE KNEES



VARIATION FOR FULL FIGURED FEMALES

COLOR SCHEME



SCARF VARIATION

YEAR ONE: GREEN SCARF

COMMERCIAL FOOD PREPARATION: ORANGE SCARF

GARMENT CONSTRUCTION: RED SCARF

INTERIOR DECORATION: BLUE SCARF

NUTRITION FOR DIETARY TECHNICIAN: PURPLE SCARF

A GIRL
SHOULD BE TWO THINGS
CLASSY
&
FABULOUS

- Coco Chanel -

DETAILS

**HOUSEHOLD
MANAGEMENT**



**STUDIED
DISTINGUISHED
REMARKABLE
STRIKING**



**FASHION
IS ABOUT
SOMETHING THAT
COMES FROM
WITHIN YOU.**

- NELSON MANDELA



**#CHOOSE SUCCESS
#WORK FOR IT**



fashionable stylish inspired look sleek picture dress fancy
trendy cravat culture looks necktie photography fashion a
popular advertising celebrity smart clothes showing famili

**"SIMPLICITY IS THE ULTIMA
SOPHISTICATION** - LEONAR

quirky genre focus salon focusing musical looking artistic c
like magazines print cinema designing magazine sensibility



silhouette casual elegant glam
ccessory costume theme holl
ar human body best creation

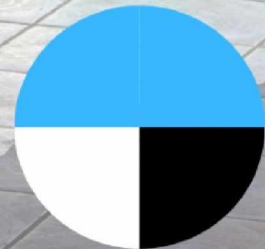
ATE FORM OF DO DA VINCI

collection textile costume party tas
usual masquerade ball novelty focused concept reality kin



DETAILS

**HOUSEHOLD
MANAGEMENT**



DRESS SHABBILY AND THEY REMEMBER THE DRESS; DRESS IMPECCABLY AND THEY REMEMBER THE WOMAN.

- COCO CHANEL

**#CHOOSE SUCCESS
#WORK FOR IT**

”
YOU CAN NEVER BE
OVERDRESSED
OR
OVEREDUCATED

- OSCAR WILDE



CHAPTER FOUR

PROTECTIVE CLOTHING

fashion Guide

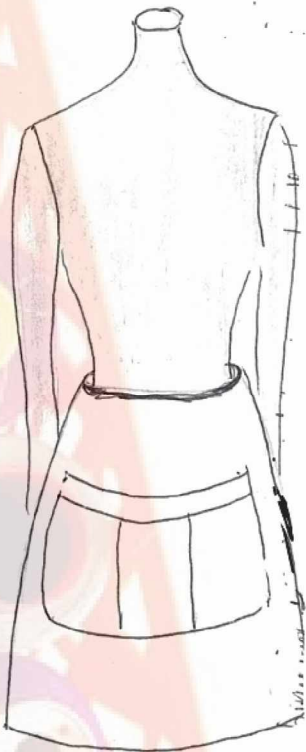
Sketch Designed by Mrs. Mryna Lee

INTRODUCTION

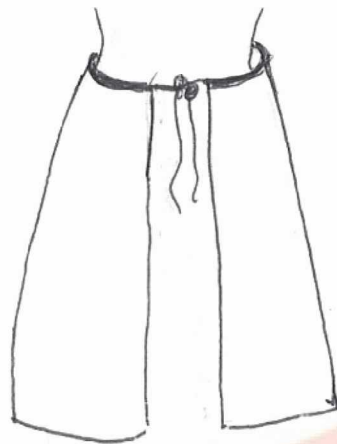
PROTECTIVE CLOTHING IS CLOTHING DESIGNED TO PROTECT EITHER THE WEARER'S BODY OR OTHER ITEMS OF CLOTHING FROM HAZARDS SUCH AS HEAT, CHEMICALS AND INFECTION. THIS SECTION ILLUSTRATES THE SPECIFIED PROTECTIVE CLOTHING USED WITHIN THE VARIOUS DEPARTMENTS.

CATERING & HOSPITALITY

PROTECTIVE WEAR: RESTAURANT APRON



FRONT VIEW



BACK VIEW

DETAILS:

- THE LENGTH OF THE APRON IS 3" ABOVE THE KNEES.
- BIAS BINDING 1/2" WIDE WAIST BAND SECURED TO THE BACK
- 3" SHALLOW POCKETS OF 5" DEPTH AND 5" WIDE EACH.
- MADE FROM BLACK DRILL

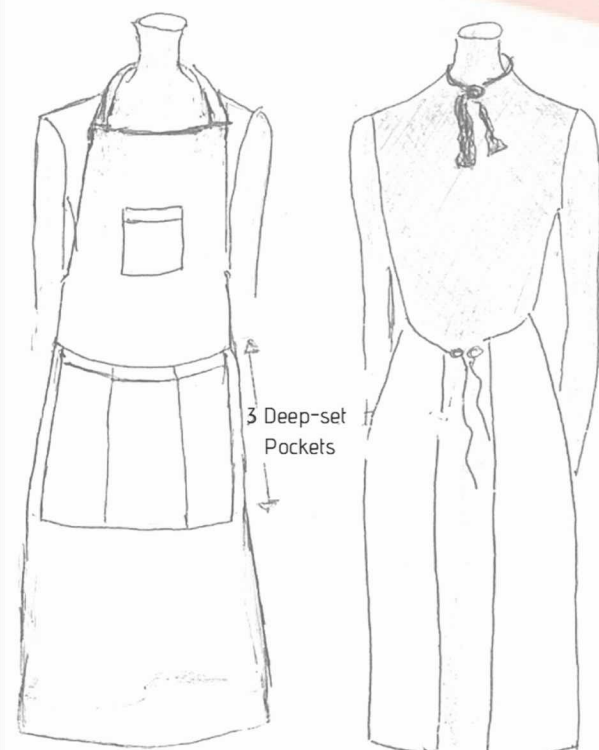


COLOR SCHEME

PROTECTIVE WEAR: BUTCHER'S APRON (HOT MEAT)

FRONT VIEW

BACK VIEW



DETAILS:

- THE NECKLINE OF THE BUTCHER'S APRON IS SQUARE IN SHAPE
- IT IS SUPPORTED BY 2 STRAPS SECURED BEHIND THE NECK IN AN ADJUSTABLE MANNER.
- MADE FROM WHITE COTTON DRILL
- THE LENGTH OF THE APRON IS 3" BELOW THE KNEES
- THE DEPTH OF THE 3 POCKETS ARE 8" EACH AND 5" WIDE

SHOES: NON-SKID CROCKS—BLACK OR WHITE | WHITE SOCKS (EXCEPT FOR RESTAURANTS—KITCHEN ONLY)



COLOR SCHEME

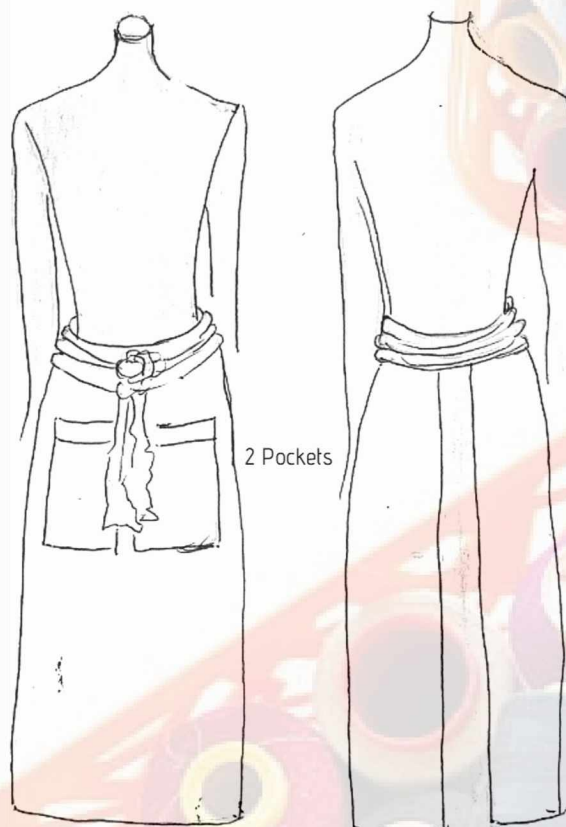
PROTECTIVE WEAR: HALF LENGTH APRON

DETAILS:

- THE BAND FOR THE HALF LENGTH APRON IS 2" WIDE, WRAPPED AROUND THE BACK, AND TIED TO THE FRONT.
- THE LENGTH OF THE APRON IS 3" BELOW THE KNEES.
- THE DEPTH OF THE 2 POCKETS ARE 8" EACH AND 6" WIDE.
- MADE FROM WHITE COTTON DRILL.

FRONT VIEW

BACK VIEW



COLOR SCHEME

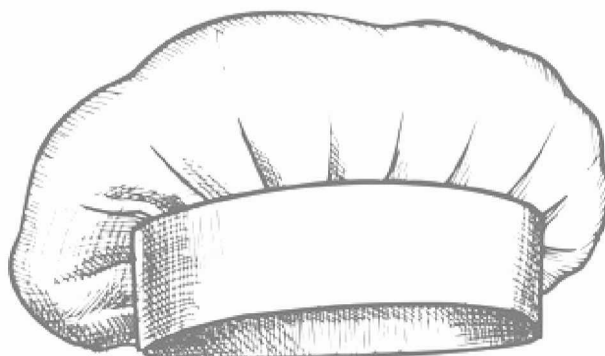
PROTECTIVE WEAR: CHEF HAT

DETAILS:

- WHITE DRILL OR HAIR NET (WHITE)
- 2" HEADBAND SECURED AT THE BACK WITH VELRICO, ELASTIC OR A TIE.
- EXCEPT FOR RESTAURANT—KITCHEN ONLY



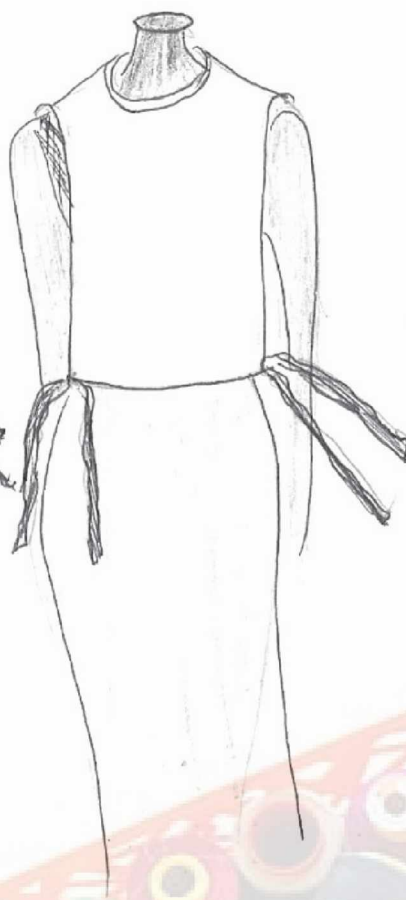
COLOR SCHEME



COMMERCIAL FOOD PREPARATION | GENERAL COSMETOLOGY HOUSEHOLD MANAGEMENT | NUTRITION FOR DIETARY TECHNICIAN

FRONT VIEW

BACK VIEW



DETAILS:

- WHITE POLYESTER COTTON
- SCOOPED NECKLINE
- POCKETS 6" WIDE AND 8" DEEP
- LENGTH 3" BELOW THE KNEES
- EACH SIDE IS TIED AT THE WAIST
- BACK OF THE APRO ENDS AT WAISTLINE

NOTE:

GENERAL COSMETOLOGY WILL USE BLACK BUT NO HAT

YEAR ONE HOUSEHOLD MANAGEMENT WILL USE GREEN WITH MATCHING HATS (AS SEEN ABOVE)

CREDITS:

PROJECT EDITOR: MRYNA LEE & ALLISON ADRIAN
TECHNICAL DESIGNER: JEMUEL PARASRAM
PHOTOGRAPHER: LAVERNE WELCH
L.T'S PHOTO & VIDEO SERVICES

SPECIAL THANKS TO:

SHARMAINE MARSHALL – VICE PRINCIPAL

DANIEL PERSAUD: ACCOUNTANT

TANDIKA GRIFFITH – HOD GENERAL COSMETOLOGY

VALENA GRENION – HOD CATERING & HOSPITALITY

ALLISON ADRIAN – HOD HOUSEHOLD MANAGEMENT

KAVITA MOORE – HOD NUTRITION FOR DIETARY TECHNICIAN & COMMERCIAL FOOD PREPARATION

PENELOPE HARRIS – RETIRED PRINCIPAL (APRIL 2018)

JOYANN HARRY – RETIRED VICE PRINCIPAL AG (DECEMBER 2018)





REFERENCES

QUOTES FROM:

EDITH HEAD- PAGE 9

ANONYMOUS- PAGE 10

IMAN- PAGE 12

NIA LONG- PAGE 16

ANNE KLEIN- PAGE 17

COCO CHANEL- PAGE 19

TOM FORD- PAGE 20

COCO CHANEL- PAGE 24

NELSON MANDELA- PAGE 25

LEONARDO DA VINCI- PAGE 27

COCO CHANEL- PAGE 28

OSCAR WILDE- PAGE 29







CARNEGIE SCHOOL OF HOME ECONOMICS

Motto: Excellence Through Creativity

211 Durban & High Streets, Werk-en-Rust, Georgetown

Email: cshe@moe.gov.gy | exclusive_kingstonhouse@yahoo.com

General Office: (592) 226-2441 | Principal: (592) 223 - 8100

CREATED BY JEMUEL DANIEL PARASRAM
EXPRESSIVE DESIGNS & DOCUMENT SERVICES
EMAIL: JEMUELPARASRAM@GMAIL.COM | EXPRESSIVEDESIGNSGY@GMAIL.COM
CONTACT: +592 216 0524 | + 592 646 5598